

BESSA[®]
ART&DESIGN

DESIGN
BASED ON
TRUE
STORIES

PRESS KIT

2020



WHAT WOULD LIFE BE WITHOUT MEMORIES?

Bessa is an Art & Design brand that prides itself on creating handcrafted high-end products inspired by notable memories. Designed and produced in Oporto – Portugal, Bessa recovers techniques of craft production to unique pieces and brings back the charm of ancient times, through a new interpretation.

“Our exclusive work recreates feelings and stories of other times that seek to build a perfect past. A past full of exciting memories, inspiring feelings of nostalgia.” - João Bessa.

PASSIONATE MEMORIES

info@bessadesign.com | www.bessadesign.com

PASSION

Passion for the Past – The past is our best inspiration. In contrast with the standardized current trends the past is exciting and provides us with memories that we do not want to forget.

DESIGN

Bessa's pieces tell a story and have a soul that holds the essence of the past. All Bessa designs are based on true stories.

EXCELLENCE

The pieces are unique. They are the result of the designer's and artisan's commitment and passion for a luxurious past.

Excellence defines each piece. Involved in its refinement our imagination travels through time and through elegant and pleasant places.

EXCLUSIVENESS

Bessa's creations are exclusive. They are luxurious author's pieces that can only be found in Bessa. The pieces are designed and handmade just for this brand. All our creations are designed to fulfill the requirements of exclusive clients, who demand the best for their lives.

CRAFT PRODUCTION

All Bessa's pieces are handmade. We value and bring to life the production techniques that have been forgotten through the years in an industrialized world. It is only possible to transmit passion because each Bessa's piece is shaped by several experienced craftsmen who seize the challenge of turning the past into the present.

From each of them, from their hands, their love and wisdom come the delicate details that make the perfection of each piece.

TRADITION AND INNOVATION

The pieces are a work of art where tradition and innovation are inextricably intertwined to elevate noble materials. Bessa proudly boasts world class production by combining cutting-edge technology with ancient hand crafting techniques that have been developed throughout centuries.

PASSIONATE MEMORIES

info@bessadesign.com | www.bessadesign.com

THE DESIGNER

João Bessa is a creator who seeks the origins in all aspects of his daily life. Being passionate about the history of Design, João is inspired by Vintage & Classic and recreates the best of the past in his own way. He combines his very own style with Art and Design, creating exclusive furniture pieces of pure beauty.

João was born in Braga and studied management, but soon realized that his passion was in the creation of art and design pieces. Attracted by the multicultural environment and the unique architecture of the city, João moved to Oporto city where he earned a degree in Product Design. After working with several international recognized brands in the world of Design, João Bessa decided to make his passion a way of living. It was then that he decided to create his own design brand. In 2014, Bessa Design was born to make the world aware of the exclusive products made in Portugal.

PASSIONATE MEMORIES

info@bessadesign.com | www.bessadesign.com

“Bessa’s pieces tell a story.

I inspire myself in events, people, stories and iconic pieces of the past. Everything that is familiar and that marked me in one way or another. The empathy with the story that each piece perpetuates creates a bond with people.

I am a very nostalgic person. I love to remember good times and everything that is past. What defines us is the time and what we did with it. Memories are my richest good.” João Bessa.



PASSIONATE MEMORIES

info@bessadesign.com | www.bessadesign.com

GRANDFATHER

FLOOR CLOCK



*"When I think of you
I feel grateful for what we did together!!
Thank you Grandfather for the
beautiful memories."*

João Bessa

PASSIONATE MEMORIES

info@bessadesign.com | www.bessadesign.com

IMAGINARIUM

MIRROR

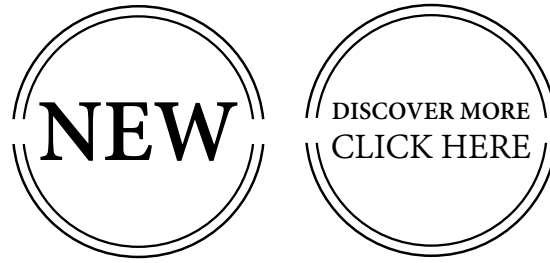


*I miss childhood daydreams.
I often remember the
perfect words that I
used to idealize back then !!*

PASSIONATE MEMORIES

info@bessadesign.com | www.bessadesign.com

UNIQUE PIECES
FOR ICONIC PROJECTS



MONROE DRAMA

floor lamp



Limited edition 1/50

W 41cm (16,1") H 178cm (70,1") D 41cm (16,1")

Bessa continues its relentless mission of sharing unique design that combines innovation with style, crafted with the finest quality. Another example of this testament is the renovation of one of Bessa's most iconic pieces, the Monroe floor lamp, in a new limited edition of 50 units. The majestic change of this unique design is captured by the gleam of the dramatic and artistic finishing, which is an innovative brass work. Marilyn Monroe, the sexiest Pin-up of the 50's, inspired this piece of Art & Design. The design of the Monroe Lamp captures the essence of her image and the sensuality of her legs. The lampshade and the tassel fringe complement the set, reminding the dresses used at the time. One hundred percent hand-worked with noble materials, the Monroe Lamp is another piece that expresses a familiar story, bringing passionate memories.

Materials: High gloss black brass + polished brass + varnish, fabric, tassel fringe.

PASSIONATE MEMORIES

info@bessadesign.com | www.bessadesign.com

Bessa continues its relentless mission of sharing unique design that combines innovation with style, crafted with the finest quality. Another example of this testament is the renovation of one of Bessa's most iconic pieces, the Monroe floor lamp, in a new limited edition of 50 units. The majestic change of this unique design is captured by the gleam of the dramatic and artistic finishing, which is an innovative brass work. Bessa invited art and design lovers to see the new look of the world's sexiest lamp.



MOAI BIG

dining table



Limited edition 1/50

W 400cm (157,5") H 75,5cm (29,7") D 190cm (74,8")

The Moai, also known as the Great Heads or the Naoki, are 887 colossal statues in stone located on Easter Island. These beautiful creations are wrapped in mystery and there are several theories around their existence. For some, the Moai were an homage to the ancestors and the gods. For others, especially the Moai that have "hats" (Pukao), served as lightning rods. What is certain is that the incidence of lightning on the island is high, and at night or on days of low light, the Moai are illuminated when charged with lightning energy. The Moai are one of the most mysterious and striking cultural manifestations and served as inspiration for Bessa to create a limited edition piece. A creation that preserves the mysterious stories and unique memories of a civilization that we can only imagine.

Materials: Polished brass + varnish, extra clear tempered glass.

PASSIONATE MEMORIES

info@bessadesign.com | www.bessadesign.com

Bessa opened an exciting and new cultural chapter for Paris with the launch of amazing limited editions. These masterpieces brought passionate and mysterious stories to the city of light. These stories are materialized in noble materials and delicate craft production that elevate premium design to a whole new level. They were publicly presented for the first time at Maison et Objet. The Moai Big dining table is an astonishing art piece that is supported by four stunning Easter Island heads in polished brass. The glass top makes this creation elegant and fit to be the queen of any dining room. Moai Big is limited to 50 units.





PIRATE

mirror



Limited edition 1/10

W 99,5cm (39,2") H 99,5cm (39,2") D 6cm (2,4") + Dagger 16 cm (6,3")

This piece of art tells stories of looting and fury, from pirates to avid treasure hunters. The luxurious dagger ripping the mirror symbolizes these serves. The dagger is made with fine silver and decorated with precious stones and diamonds. The engraved eagle at the end of the cape represents the strength and power of these sea men. Pirate wall mirror is a piece full of life and with a strong soul that brings into our homes stories of reckless adventures.

Materials: Mdf structure + polished brass sheet, fine silver (dagger), precious stones (6 Rubies/ 4 Emeralds/ 2 Sapphires) and 160 diamonds.



IMAGINARIUM

mirror

W 130cm (51,2") H 257cm (101,2") D 12cm (4,7")

This piece was inspired by our childish imagination. Perfect worlds full of dreams where we lived such special realities. As children, we imagined and felt things our way: beautiful, comfortable, fulfilling and challenging. This mirror visually summons the nostalgia of such distant world to which we are bound by feelings of belonging that remain alive and very dear. As we look at ourselves in the Imaginarium mirror, we remember old adventures and let ourselves into new and passionate realities. The Imaginarium mirror is a piece of art with a strong visual impact. It astonishes by the reflections and distortions that surround us and seduces by the luxurious frame in carved wood, delimiting the contemporary space of the piece. This conjugation, contrasting in itself, becomes perfect. This is a mirror that summons a unique look, making the piece even more unique.

Materials: Carved wood + gold leaf, inox hammered sheet, (back) mdf structure + lacquered inox.



MONROE

floor lamp

W 41cm (16,1") H 175cm (68,9") D 41cm (16,1")

Marilyn Monroe, the sexiest Pin-up of the 50's, inspired a piece of Art & Design. The design of the Monroe Lamp captures the essence of her image and the sensuality of her legs. The lampshade and the gold tassel fringe complement the set, reminding the dresses used at the time. One hundred percent hand-worked with noble materials, the Monroe Lamp is another piece that expresses a familiar story, bringing passionate memories.

Materials: Polished brass + varnish, fabric, tassel fringe.

MONROE

console

W 145cm (57,1") H 87cm (34,2") D 32cm (12,5")

Marilyn Monroe, the sexiest Pin-up of the 50's, inspired another piece of Art & Design. This piece was born from the Monroe floor lamp and its design captures the essence of Monroe's image and the sensuality of her legs. One hundred percent hand-worked with noble materials, the Monroe console is another piece that expresses a familiar story, bringing passionate memories.

Materials: Polished brass + varnish, Emperador marble.

LIBERTY

armchair

W 112cm (44,1") H 145cm (57,1") D 90cm (35,4")

The sculptural forms of the 30's inspired the 'Liberty Collection'. The tubular and steel structures that have marked those years are combined with a new inspiration that emphasizes the antagonistic feeling of deprivation of liberty. This conjunction marks the alliance of a vintage style with modern sensibilities. The curvy and exaggerated shapes of the chair's arms symbolize the end of enclosed spaces which are transformed into open doors to freedom.

Materials: Polished brass + varnish, patterned velvet.



CHESS

center table

W 145cm (57,1") H (table top) 31cm (12,2") + (horse) 29cm (11,4") D 145cm (57,1")

Chess was invented in Asia about 1500 years ago but it was in the XIII century that modern chess was born and implanted in Europe. The Chess Table is inspired by the chess board and the game's most important move, the checkmate! The Chess Table depicts the ultimate play in which the Horse defeats the King, who metaphorically melts into a space that recreates a battlefield. These pieces were designed by Bessa and hand carved. A piece of art and design that recreates one of the most ancestral and strategic games of civilization

Materials: Polished brass + varnish, mdf structure, walnut root veneer + high gloss varnish.

PERGAMO

suspension lamp

W 102cm (40,2") Ø 10cm (3,9")

This creation is the first piece being launched within the suspension lamps category. This piece was born from the Pergamo lamps collection which was inspired by parchments. Parchment is the name of animal skin prepared to be written on, or the actual document written on such material. The word parchment evolved from the name of the Greek city Pergamon, which is believed by some to have been the epicenter of this invention. Used by ancient people to record important data, parchment is today a historical treasure. The delicacy and characteristics of the parchment make it a rare and precious object. Bessa recreated an old and deteriorated parchment in a sculptural piece of art and design to recover the history of such remarkable material.

Materials: Hammered polished brass + varnish, acrylic.

GRANDFATHER

floor clock

W 77cm (30,3") H 171cm (67,3") D 28,5cm (11,2")

This is a piece marked by great sentimental value because it is inspired by the grandfather's tender figure and his old clocks that accompanied our childhood. This unique piece adds a classic and classy touch to our modern spaces. The Grandfather floor clock is a creation that combines this classic beauty with a contemporary and irreverent visual that ennobles any environment. The Grandfather clock evokes memories that are shared by millions across the world and, as a result, boasts five watches that represent five great capitals of fashion and design.

Materials : Calacatta gold marble, brass + 24k gold plated (photo above) or patina finishing (right photo), brass gear train mechanism, extra clear glass.



LENNON

console table

W 151cm (59,4") H 86cm (33,8") D 38cm (14,9")

Bessa started 2019 by launching a piece inspired by a story that touched the world. The life of John Lennon - an artist who found one of the most important bands of the twentieth century and who revolutionized the music industry. Lennon's music inspired love throughout generations and still moves hearts nowadays.

Bessa celebrates Lennon's life and created another piece filled with passionate memories.

Materials: Polished brass + varnish, extra clear tempered glass.

METEOR

mirror

W 120cm (47,2") H 120cm (47,2") D 13cm (5,1")



People all over the world share different beliefs about meteors and meteorites. Every ancient civilization venerated these phenomena and related them to omen, sharing the belief that the meteors are extraordinary. Even today, we allow ourselves to be seduced by the mystery and beauty that surrounds meteors. We have all witnessed, on clear nights, the fleeting passage of a meteorite. This dazzles us every single time and we keep forever these passionate memories! The Meteor Mirror is inspired by these unique events, capturing the moment that a meteor hits the Earth in the shape of a crater.

Materials: Hammered polished brass + varnish, mdf structure, walnut root veneer, high gloss varnish, mirror.

LATEST
TRADE
SHOW

2020

MAISON & OBJET PARIS

M & O

Paris 2020



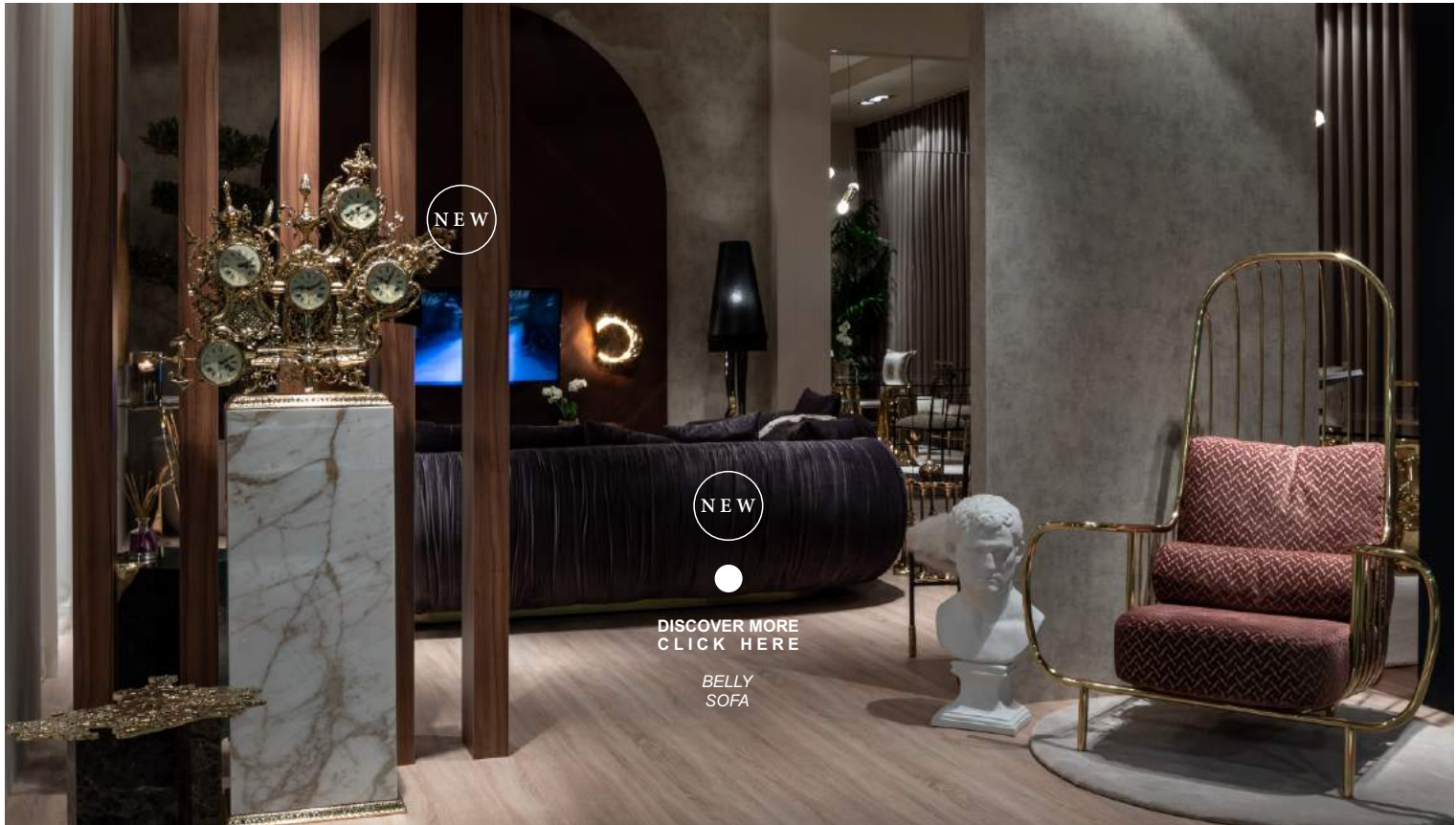
MAISON
&OBJET
PARIS

EXTRAORDINARY
REVELATIONS

NEW
Collections


LIMITED
EDITION

Showcased
Products



NEW

NEW

DISCOVER MORE
CLICK HERE

BELLY
SOFA



DISCOVER MORE
CLICK HERE

GRANDFATHER
FLOOR CLOCK

NEW

DISCOVER MORE
CLICK HERE

PAU ESCAT
ART CANVAS
(Bessa partner)



DISCOVER MORE
CLICK HERE

GRANDFATHER
FLOOR CLOCK



NEW



NEW



DISCOVER MORE
CLICK HERE

1.3
SIDE TABLE



DISCOVER MORE
CLICK HERE

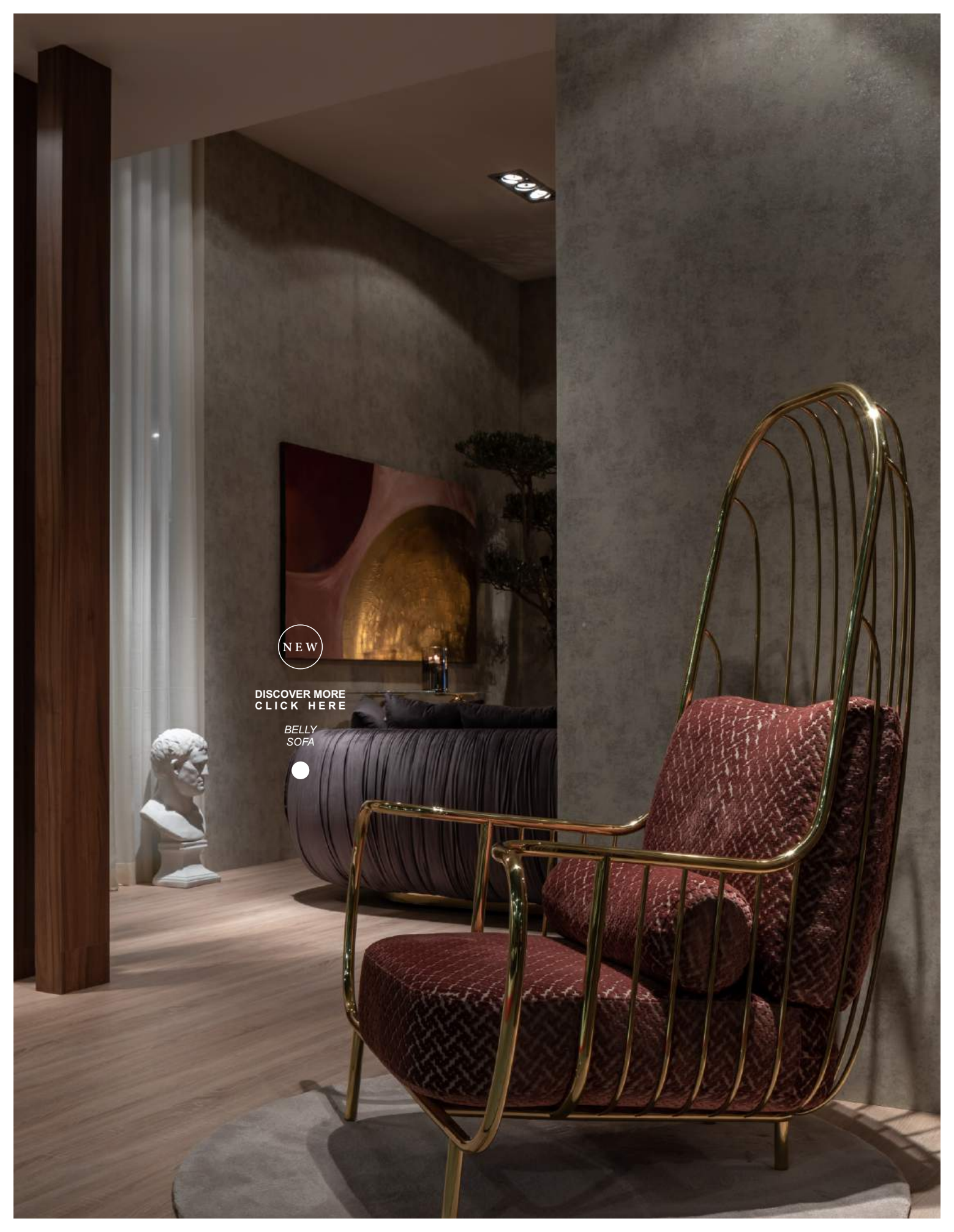
LIBERTY
ARMCHAIR

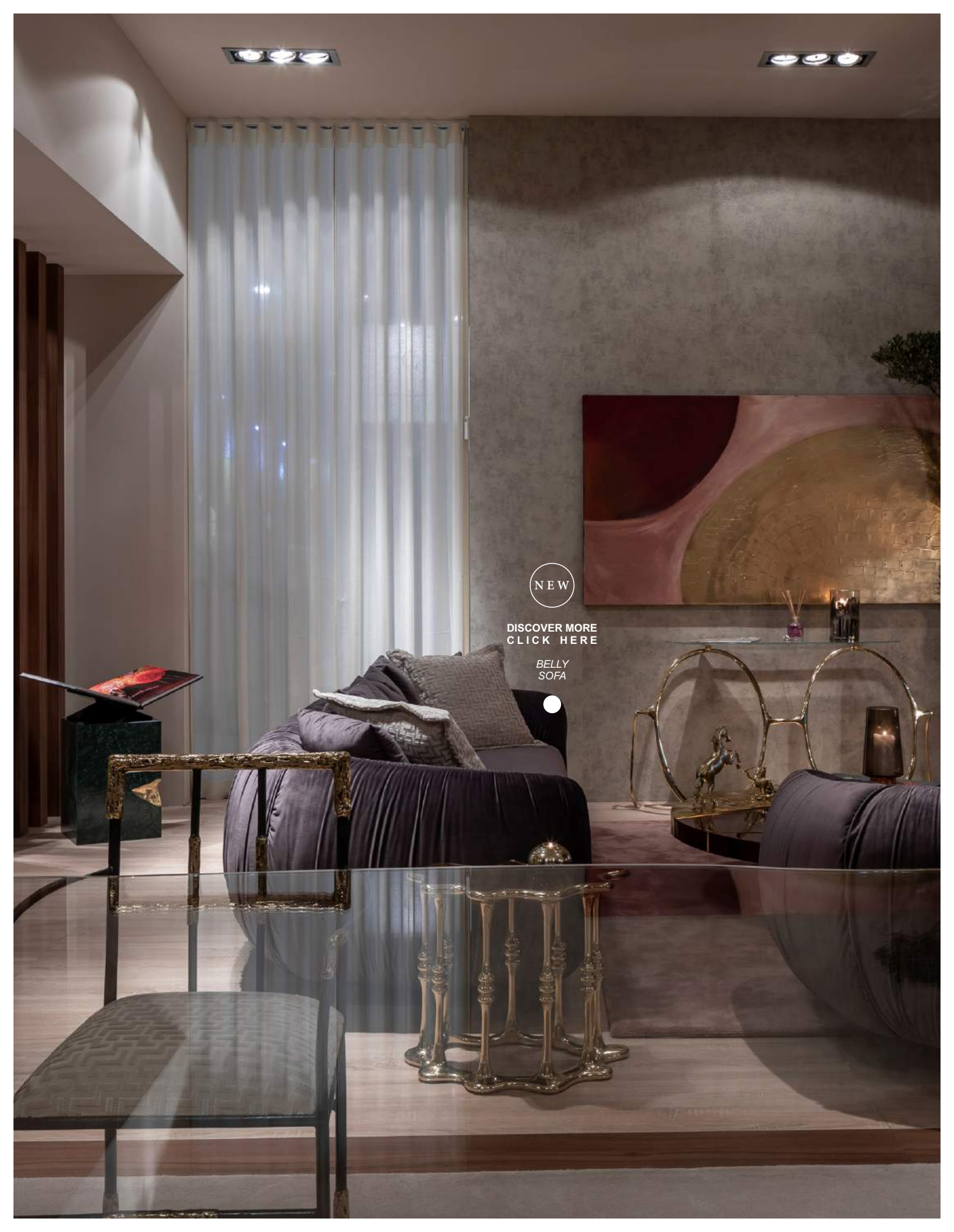


NEW

DISCOVER MORE
CLICK HERE

BELLY
SOFA





NEW

DISCOVER MORE
CLICK HERE

BELLY
SOFA



DISCOVER MORE
CLICK HERE

ASSOULINE
HANDCRAFTED BOOKS
(Bessa partner)



DISCOVER MORE
CLICK HERE

RUINS
SIDE TABLE

DISCOVER MORE
CLICK HERE

PAU ESCAT
ART CANVAS
(Bessa partner)



DISCOVER MORE
CLICK HERE

LENNON
CONSOLE





DISCOVER MORE
CLICK HERE

*LENNON
CONSOLE*

DISCOVER MORE
CLICK HERE

CHESSE
CENTER TABLE

DISCOVER MORE
CLICK HERE

ASSOULINE
HANDCRAFTED BOOKS
(Bessa partner)

DISCOVER MORE
CLICK HERE

ECLIPSE
WALL LAMPS



DISCOVER MORE
CLICK HERE

CHESS
CENTER TABLE



DISCOVER MORE
CLICK HERE

ECLIPSE
WALL LAMPS

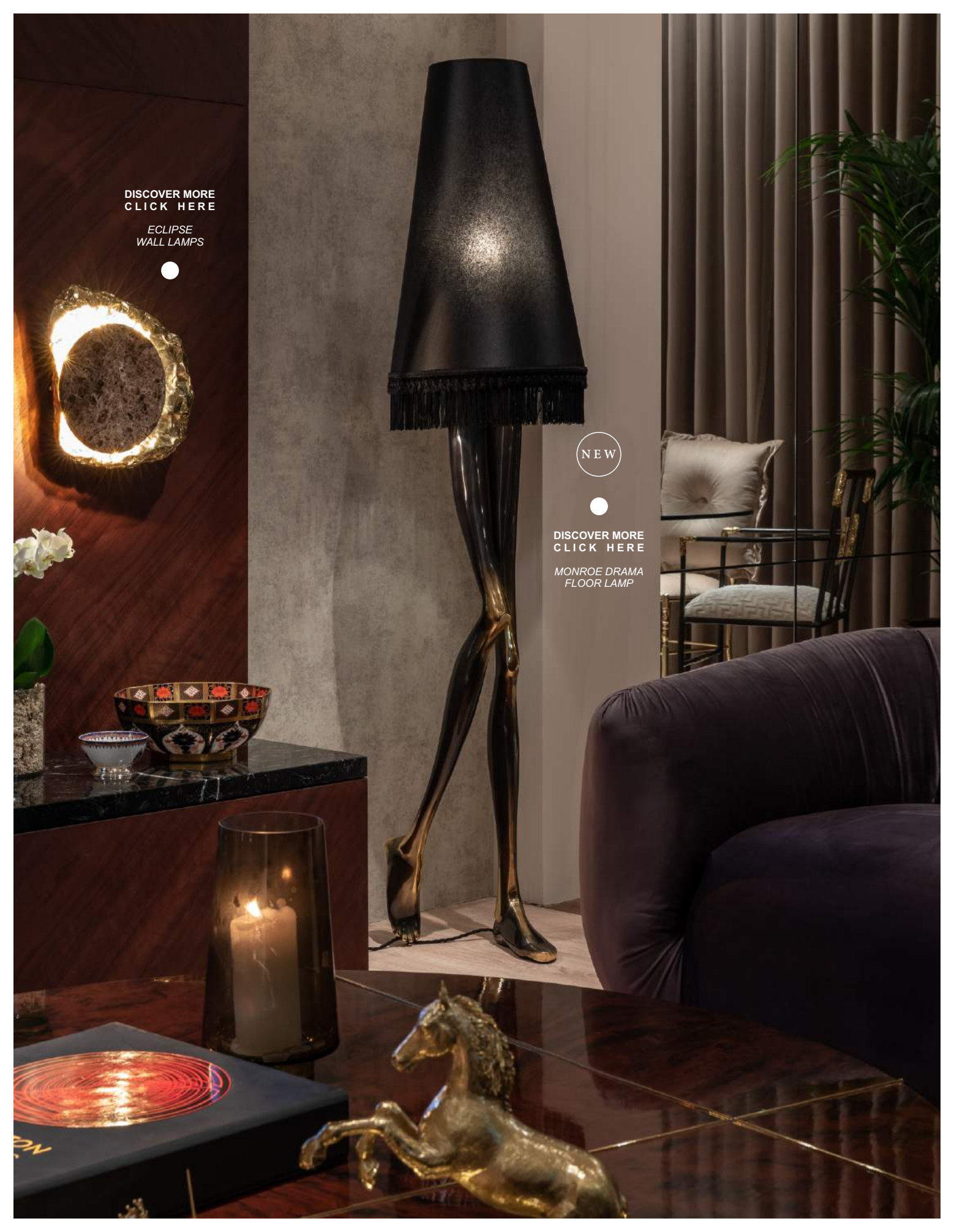


NEW



DISCOVER MORE
CLICK HERE

MONROE DRAMA
FLOOR LAMP



DISCOVER MORE
CLICK HERE

PIRATE
MIRROR



NEW



DISCOVER MORE
CLICK HERE

ANTIQUE
TABLE



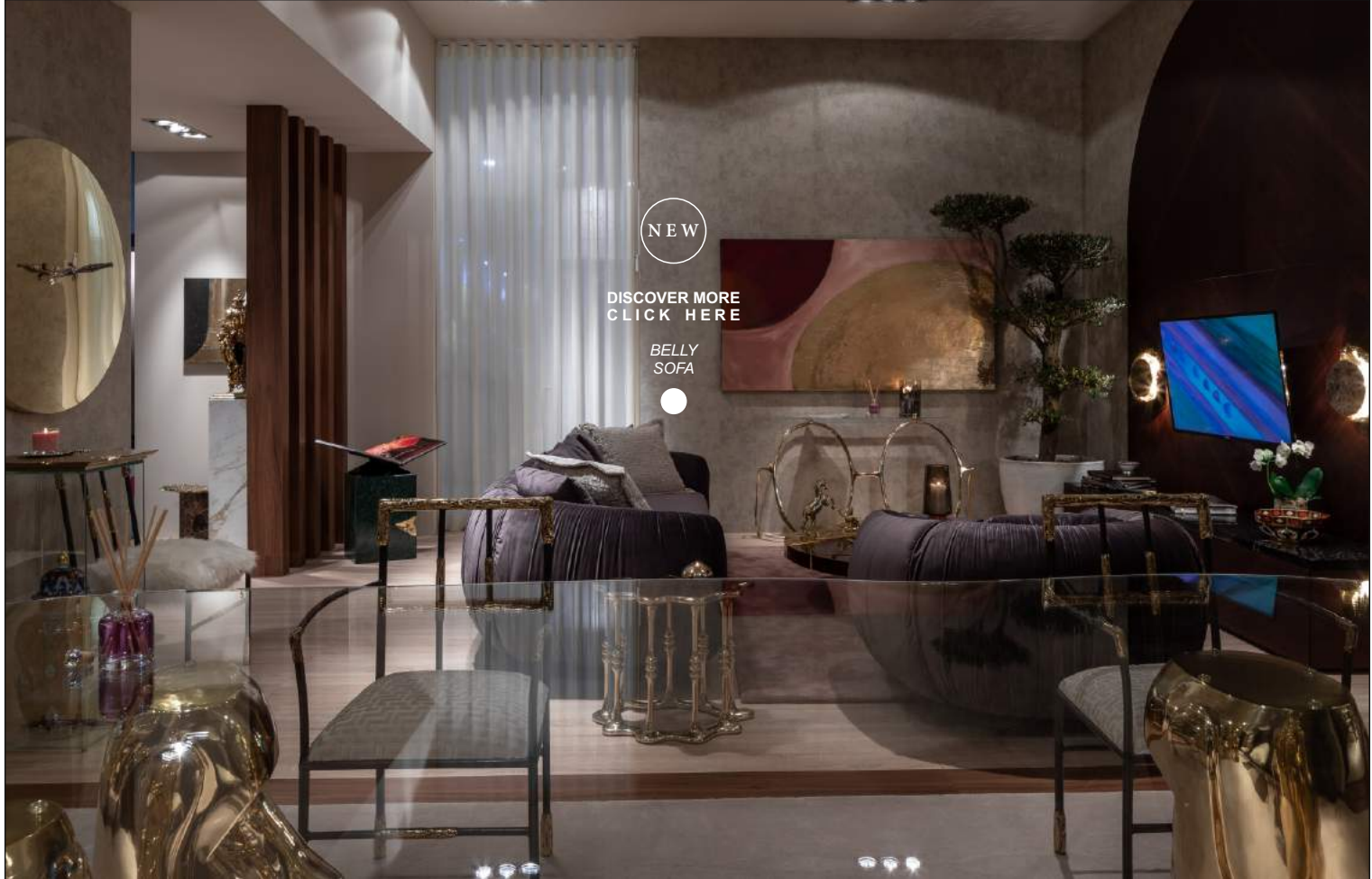
DISCOVER MORE
CLICK HERE

PIRATE
MIRROR



NEW

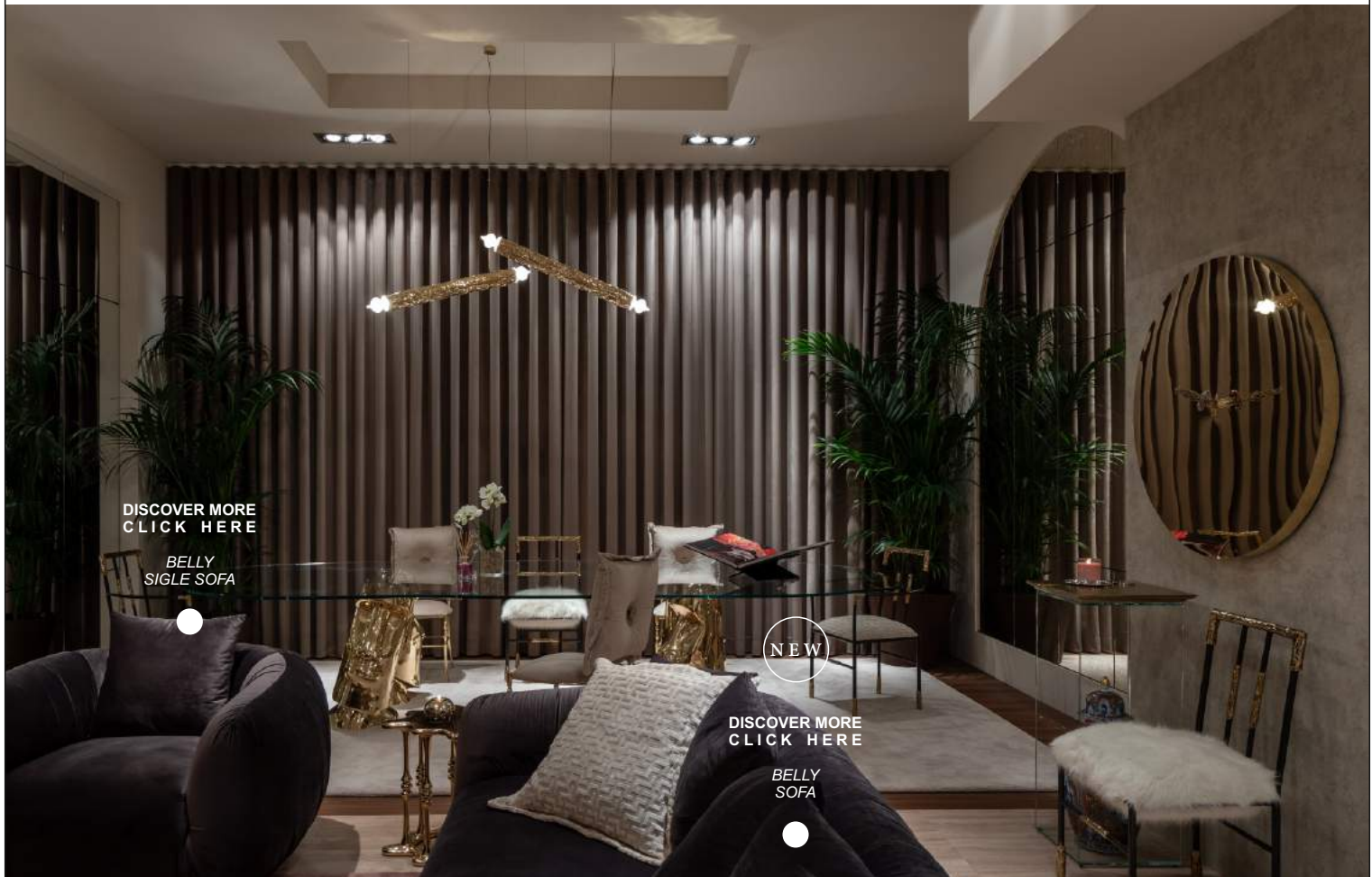




NEW

DISCOVER MORE
CLICK HERE

BELLY
SOFA



DISCOVER MORE
CLICK HERE

BELLY
SIGLE SOFA



NEW

DISCOVER MORE
CLICK HERE

BELLY
SOFA





●
DISCOVER MORE
CLICK HERE

PERGAMO
SUSPENSION LAMPS

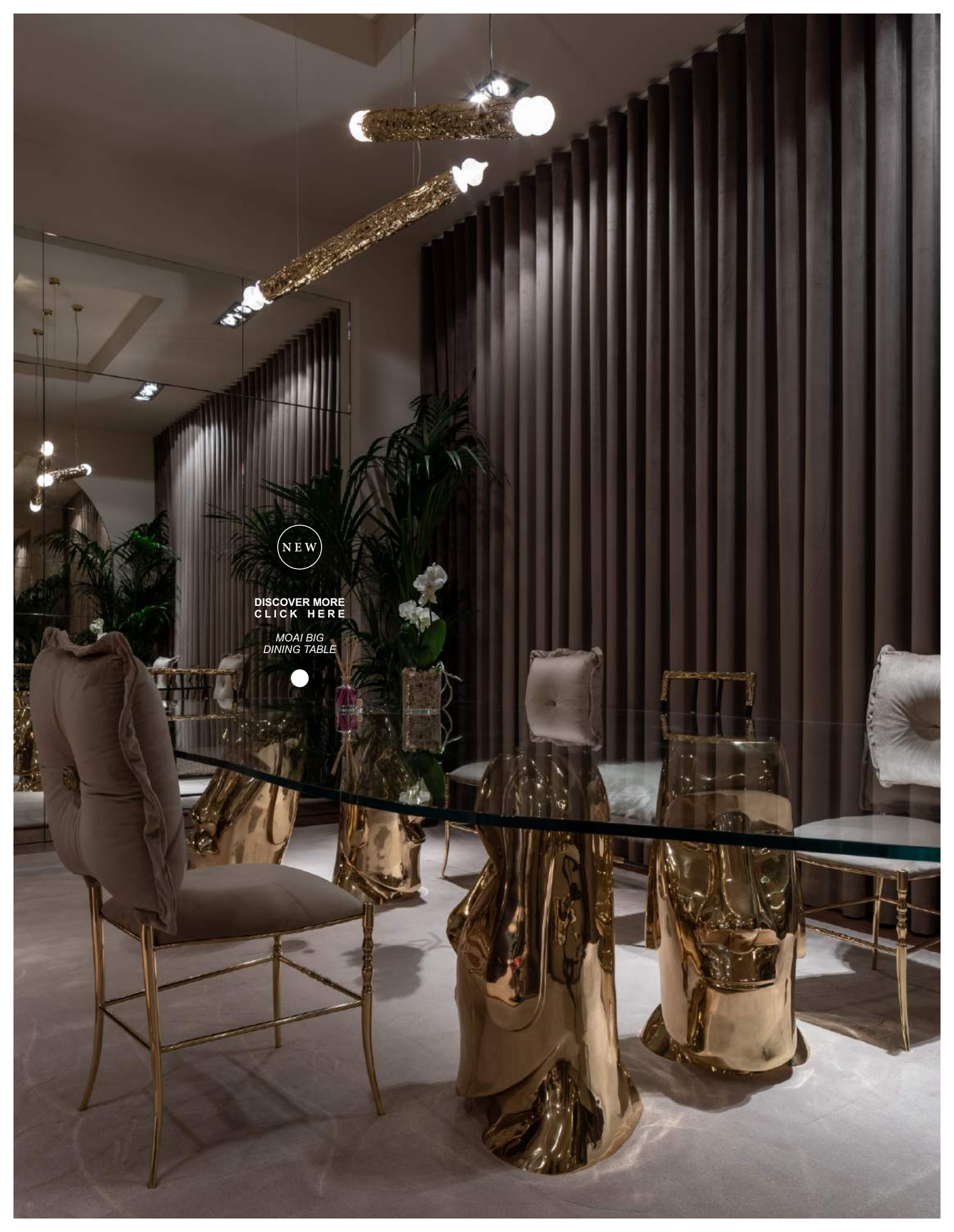
NEW

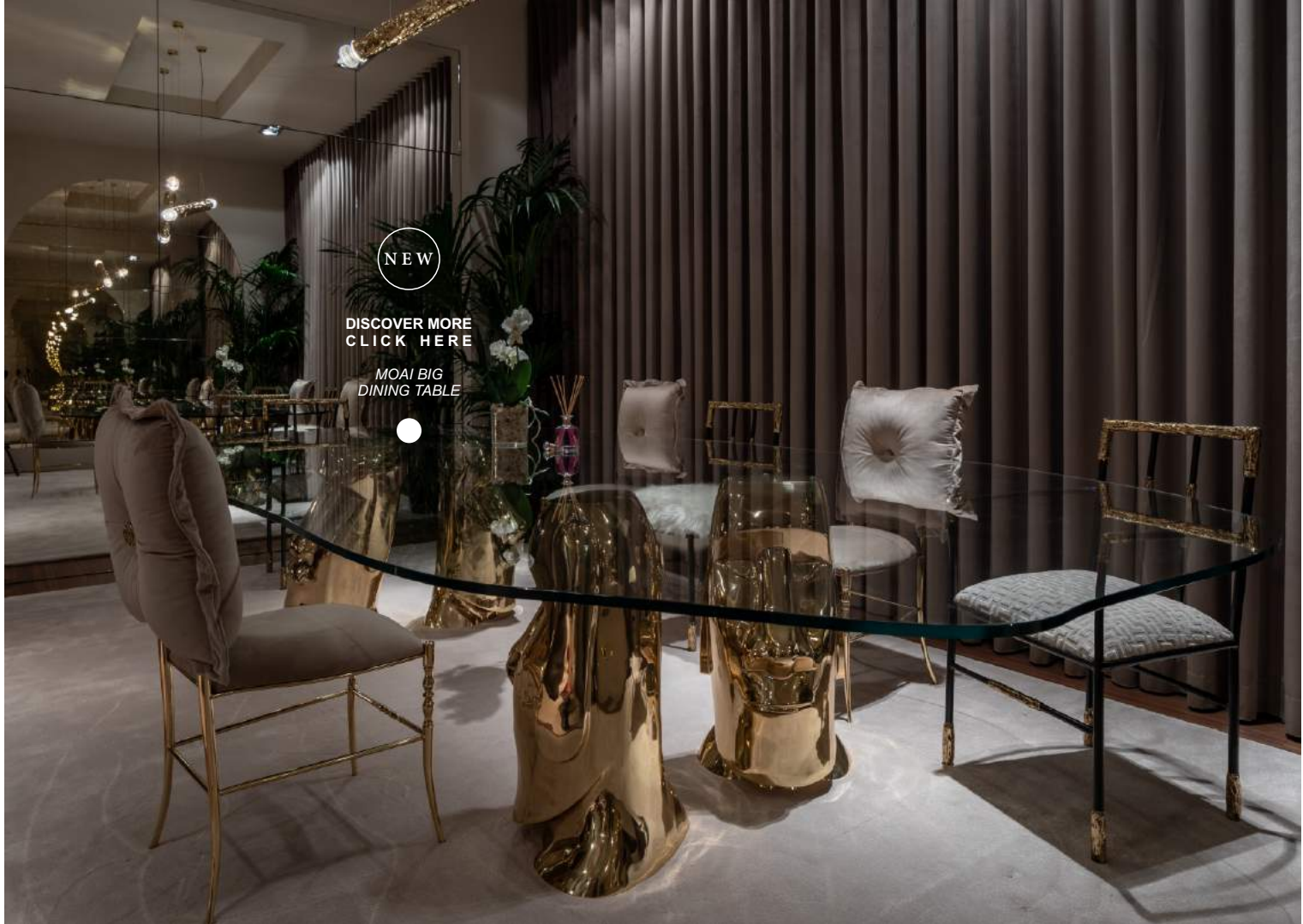


NEW

DISCOVER MORE
CLICK HERE

MOAI BIG
DINING TABLE





NEW

DISCOVER MORE
CLICK HERE

MOAI BIG
DINING TABLE



DISCOVER MORE
CLICK HERE

CHIAVARINA
CHAIR

DISCOVER MORE
CLICK HERE

MOAI BIG
DINING TABLE

NEW

DISCOVER MORE
CLICK HERE

GAUDI
SIDE TABLE



●
DISCOVER MORE
CLICK HERE
*PERGAMO
SUSPENSION LAMPS*

NEW

DISCOVER MORE
CLICK HERE
*CHIAVARINA
CHAIR*



DISCOVER MORE
CLICK HERE
*GAUDI
SIDE TABLE*



DISCOVER MORE
CLICK HERE

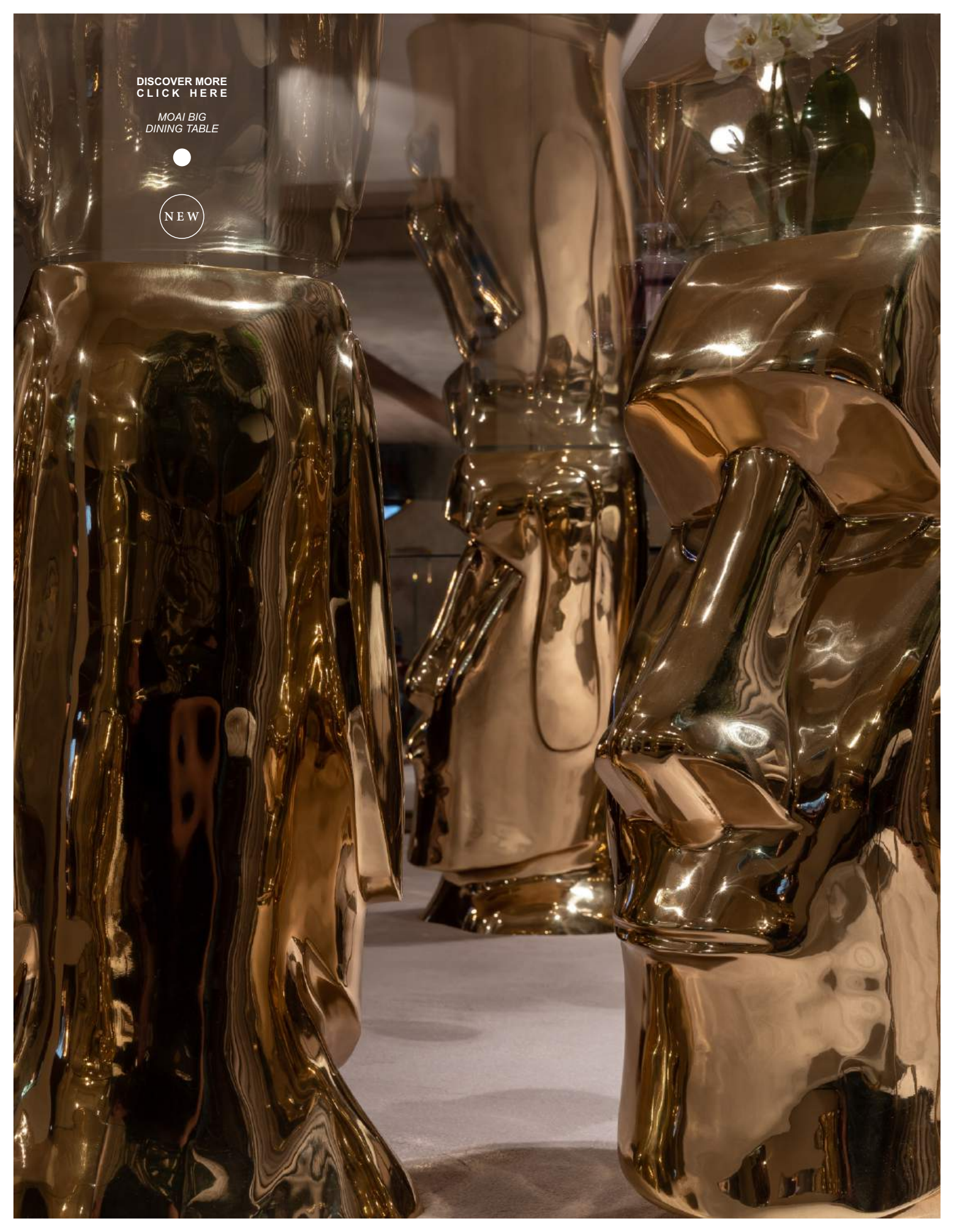
VIKING
ARMCHAIR



NEW







DISCOVER MORE
CLICK HERE

MOAI BIG
DINING TABLE



DESIGN
BASED ON
TRUE
STORIES



BESSA
ART&DESIGN

DISCOVER MORE
CLICK HERE

MONROE
FLOOR LAMP



DESIGN
BASED ON
TRUE
STORIES



MONROE & ME

@BESSADESIGN
#BESSADESIGN

DISCOVER MORE
CLICK HERE

MONROE
FLOOR LAMP



DISCOVER MORE
WWW.BESSADESIGN.COM

PASSIONATE MEMORIES

info@bessadesign.com | www.bessadesign.com